



For Earth, For Life
Kubota

U

KUBOTA ZERO TAIL SWING COMPACT EXCAVATOR **U17-5 Premium**

Kubota's U17-5 Premium zero-tail swing compact excavator gives you the performance and efficiency you need in tight spaces.



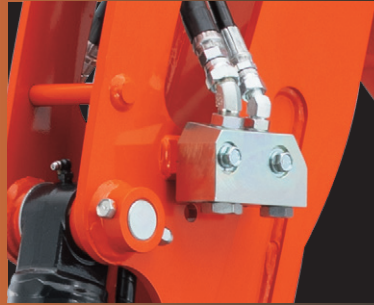
*This information is sourced from overseas and may not necessarily apply locally. It is essential that you confirm specifications and other information with your local Kubota dealer.

PERFORMANCE

Advanced hydraulic systems for superior performance and operability.

AUX1 & AUX2 Available

Two auxiliary circuits (AUX1 & AUX2) come standard on the U17-5 Premium. This new feature provides more variety of work for you.



AUX Controlled By Hand

The U17-5 Premium features AUX1 and AUX2 hand control. Proportional flow is controlled by a convenient thumb-operated switch. Applications that require a constant oil flow can be controlled from a forefinger-operated on/off switch. Up to five oil flow rates can be preset for different attachments through the meter panel, allowing quick and convenient selection for the correct oil flow setting for each type of attachment.



Zero-Tail Swing

Zero-tail swing means you'll never again worry about what is to the side or behind you while you work. No matter how far you turn, the tail always remains within the width of the tracks. Zero-tail swing also ensures excellent balance, stability and faster operation, making the U17-5 Premium ideal for jobs in congested urban areas.

Improved Stability

We improved stability by extending the rear end by 30 mm to be able to handle heavy weight attachments which require AUX, like a tilt rotator.





Two-pattern Selection System (TPSS)

TPSS is standard equipment, allowing the operator to select the most familiar operating control pattern, either ISO or SAE.

Auto-shift

The auto-shift system enables automatic travel shift from high to low depending on traction effort and terrain. This gives smoother operations when dozing and turning.

Engine Auto Idle

Engine RPM is instinctively reduced when high engine speed isn't needed. Move any control lever and the engine RPM immediately returns.

Travel Speed Switch

By placing the travel speed switch on the dozer lever, dozing operations have become faster and easier. The new location also frees up space on the floor for improved operator comfort.

Variable Track Gauge

The U17-5 Premium's track gauge can be expanded to a maximum of 1,300 mm to optimize stability when using heavy attachments. For better side stability, the maximum track expansion has been increased by 60 mm. The track gauge can also be retracted to 990 mm for easier movement through narrow passageways and to allow work in tight spaces.

990 mm

1,300 mm



INTERIOR

All-new levels of comfort.

Comfortable Operator Space

A comfortable operator is a productive operator. That's why the U17-5 Premium operators space has been enhanced to ensure optimum comfort and efficiency throughout the working day. All controls are ergonomically placed for faster and easier operation. The front meter panel can be checked without shifting your eyes from the task in hand. The mobile phone holder is within easy reach from the operator's seat, and you can charge your phone while you work.

- A. Meter panel
- B. Cup holder
- C. USB charger (TYPE-A)
- D. Mobile phone holder
- E. Engine throttle dial

Wider Foot Space

The latest interior not only optimizes maneuverability, the operator has spacious legroom, increased by 30mm from the previous model.



Semi-Suspension Seat

Designed for better fit and comfort for long hours of work, Kubota's standard semi-suspension seat minimizes strain and operator fatigue by accommodating your individual posture and weight. A retractable seat belt is fitted as standard.



SAFETY

Safety functions to support your smooth operation.

LED Boom Work Light As Standard

Bright LED boom work light provides plenty of illumination for nighttime tasks.



LED Working Light On Canopy As Standard

LED lights allow to get job done easily in dark places or work during night.



Engine Emergency Stop

In an emergency, the operator can stop the engine with the flip of a single switch.

Swivel Parking Brake

Transport is easier in all positions with the swivel parking brake.

Unload Lever

Changing the hydraulic circuit, all operations including the swing, dozer, and AUX can now be locked with the control lock lever.

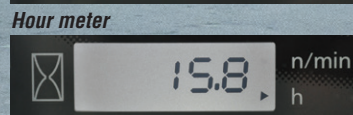
ROPS/OPG (TOP Guard, Level I) Canopy

The ROPS and the OPG (TOP Guard, Level I) canopy meet the applicable ISO, SAE and OSHA standards, providing protection from accidental rollovers, falling objects, and helps ensure an extra level of safety and security on the job.

Front Meter Panel

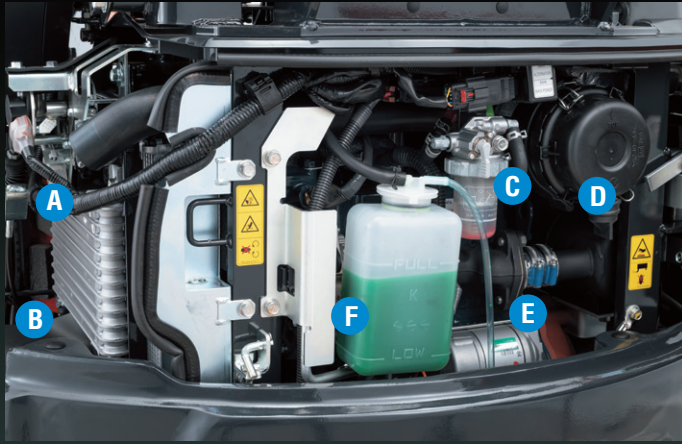
Following the excellence of Kubota's Intelligent Control System, the front meter panel puts convenience at the operator's fingertips. The user-friendly meter panel is positioned to the front right corner of the operator for better visibility, and features one-touch button operation to view the time, hour meter and tachometer. Warning lamps with code numbers on the display will alert you in case of conditions such as overheating, hydraulic problems or low battery. With easier access, simpler settings, easy-to-read indicators and alerts, you'll be aware of the excavator's functioning status.

- A. Fuel level gauge
- B. Water temperature gauge
- C. Warning lamps (overheating, hydraulic, battery)
- D. LCD display (time, hour, rpm)



SERVICE

Easier accessibility to all major components simplifies inspections and repairs.



- A. Radiator
- B. Battery
- C. Water separator
- D. Air cleaner
- E. Starter motor
- F. Coolant tank

Easy Maintenance

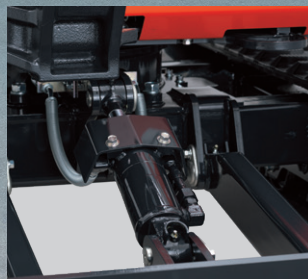
When maintenance is simple, downtime is greatly reduced and you're more productive. With the U17-5 Premium, routine maintenance is easy. The rear bonnet and the left side cover opens up without the need for tools. This allows for quick access to the engine oil dipstick, water separator, radiator, battery and much more. Plus, for extra strength and easier repairs, the U17-5 Premium's bonnet and side covers are made of steel.

Boom Cylinder

The boom cylinder is situated above the boom for maximum protection, especially during breaker or dumping operation. Movement speeds of front attachments and lifting power have been well adjusted thanks to the boom cylinder's large-diameter rod and optimal hydraulic pressure.

Two-Piece Hose Design

When an on-site replacement of a dozer cylinder supply hose is necessary, its two-piece design simplifies the job.



Protected Motor Hoses

Kubota has enclosed the travel motor hoses within the track frame for added protection—a unique feature for mini excavators of this class.



U17-5 PREMIUM OPTIONS

STANDARD EQUIPMENT

Safety system

- Engine start safety system (Unload lever)
- Swivel parking brake
- Control lock lever
- Engine emergency stop
- Travel alarm

Engine / Fuel system

- Kubota original engine
- Double-element air cleaner
- Auto idling system
- Water separator with filter
- Auto-shift

Working equipment

- 1 LED working light on the boom
- LED working light on canopy
- Auxiliary hydraulic circuit (SP1 and SP2) piping to the arm end
- Tie down points on the top frame
- 950mm arm

Operator's space

- ROPS (Roll-over Protective Structure, ISO3471)
- OPG (Operator Protective Guard, Top Guard) Level1
- Weight-adjustable semi-suspension seat
- Mobile holder
- 12V power source
- USB charger (TYPE-A)
- Hydraulic pilot control levers with wrist rests
- Dial accel
- Front meter panel

Undercarriage

- 230mm wide rubber track
- Variable track system
- Double flange track rollers
- 3 outer flange-type track rollers on each track
- 2-speed travel switch on dozer lever

Hydraulic system

- Hydraulic pressure checking ports
- Independent travel circuit
- Auxiliary activation with thumb button
- Adjustable maximum oil flow on auxiliary circuits (AUX1 and AUX2)
- TPSS (Two pattern selection system)
- Variable displacement pump
- 1st and 2nd auxiliary circuits (AUX1 and AUX2) proportional flow control at hand
- Pressure accumulator

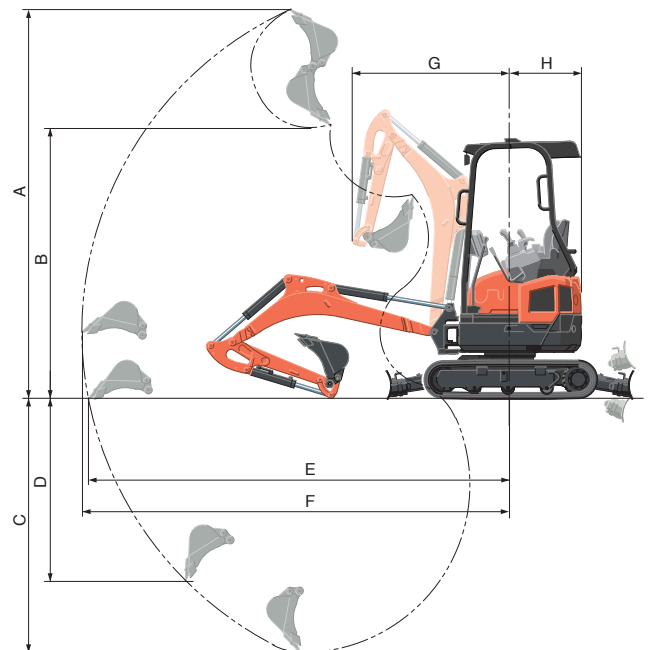
Others

- Tool box

LIFTING CAPACITY

| LIFT POINT HEIGHT (m) | LIFTING CAPACITY OVER-FRONT BLADE DOWN unit=kN(kg) | | | | LIFTING CAPACITY OVER-SIDE (track width 1300 mm) unit=kN(kg) | | | |
|-----------------------|--|-----------|-----------|-----------|--|-----------|---|---|
| | LIFT POINT RADIUS (m) | | | | LIFT POINT RADIUS (m) | | | |
| | 2 | 2.5 | 3 | | 2 | 2.5 | 3 | |
| 2.5 | — | 2.7 (272) | — | — | — | 2.7 (272) | — | — |
| 2 | 2.3 (234) | 2.6 (266) | — | 2.3 (234) | 2.6 (266) | — | — | — |
| 1 | 4.5 (456) | 3.3 (342) | 2.7 (279) | 3.6 (365) | 2.6 (263) | 2.0 (202) | — | — |
| GL | 4.7 (480) | 3.4 (352) | 2.6 (268) | 3.3 (339) | 2.4 (248) | 1.9 (194) | — | — |

Machine with ROPS canopy and rubber crawler, without bucket



WORKING RANGE

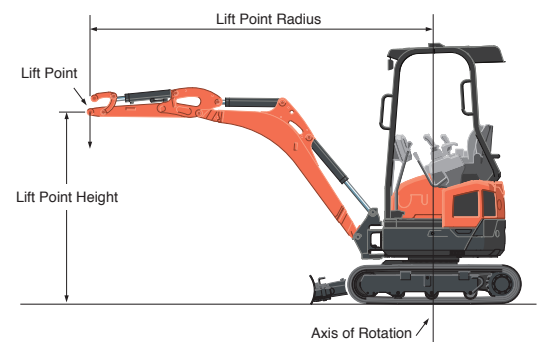
| Model | U17-5 Premium | | | |
|-------|--------------------------------------|------------|------|------|
| A | Max. digging height | mm | 3540 | |
| B | Max. dumping height | mm | 2440 | |
| C | Max. digging depth | mm | 2310 | |
| D | Max. vertical digging depth | mm | 1680 | |
| E | Max. digging radius, at ground level | mm | 3840 | |
| F | Max. digging radius | mm | 3900 | |
| G | Min. turning radius | w/o swing | mm | 1440 |
| | | with swing | mm | 1210 |
| H | Min. tail turning radius | mm | 650 | |

Please note:

* The lifting capacities are based on ISO 10567 and do not exceed 75% of the static tilt load of the machine or 87% of the hydraulic lifting capacity of the machine.

* The excavator bucket, hook, sling and other lifting accessories are not included on this table.

* Specifications are subject to change without notice for purpose of improvement.

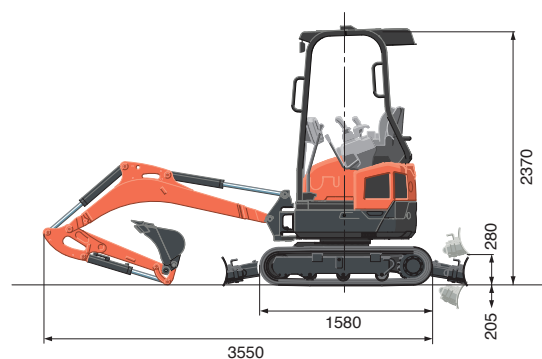
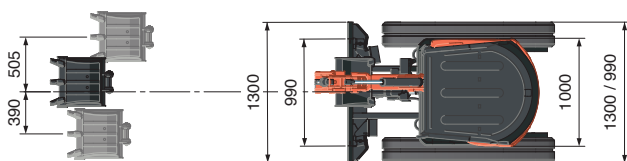


SPECIFICATIONS

| | | | | |
|---|--------------------------|-------------------------|--------------------|------------|
| Model | | U17-5 Premium | | |
| Type of ROPS / OPG (TOP Guard, Level I) | | Canopy | | |
| Type of tracks | | Rubber | | |
| Engine | Model | D902-E4-BH-6EU | | |
| | Output (SAE J1995 gross) | HP (kW) / rpm | 16.1 (12.0) / 2300 | |
| | Output (SAE J1349 net) | HP (kW) / rpm | 15.1 (11.3) / 2300 | |
| | Displacement | cc | 898 | |
| Dimensions | Overall length | mm | 3550 | |
| | Overall height | mm | 2370 | |
| | Overall width | Standard | mm | 1300 |
| | | Narrow | mm | 1000 |
| | Track gauge | Standard | mm | 1300 |
| | | Narrow | mm | 990 |
| Min. ground clearance | mm | 155 | | |
| Hydraulic system | Pump capacity | ℓ/min | 17.3 | |
| | Auxiliary hydraulic flow | AUX1 / AUX2 ℓ/min | 27.7 / 10.4 | |
| | Max. breakout force | Bucket / Arm kgf | 1534 / 867 | |
| Drive system | Travel speed | Low / High km/h | 2.3 / 4.4 | |
| | Max. traction force | Low speed kgf | 1438 | |
| | Tumbler distance | mm | 1230 | |
| | Crawler length | mm | 1580 | |
| | Shoe width | mm | 230 | |
| | Ground contact pressure | kgf/cm ² | 0.29 | |
| Swing system | Unit swing speed | rpm | 9.4 | |
| | Boom swing angle | Left / Right degree | 63 / 58 | |
| Blade | Dimensions | Width Standard / Narrow | mm | 1300 / 990 |
| | | Height | mm | 260 |
| | Max. lift above ground | mm | 280 | |
| | Max. drop below ground | mm | 205 | |
| Hydraulic oil (Reservoir / System) | | ℓ | 13 / 21.8 | |
| Fuel reservoir | | ℓ | 20 | |
| Operating weight (Including operator's weight @ 75 kg.) | | kg | 1785 | |

The company reserves the right to change the above specifications without notice. This brochure is for descriptive purposes only. Please contact your local Kubota dealer for warranty information. For your safety, Kubota strongly recommends the use of a Rollover Protective Structure (ROPS) and seat belt for almost all applications.

DIMENSIONS



Unit: mm

Kubota

©2025 Kubota Corporation

Kubota Australia Pty Ltd

25-29 Permas Way, Truganina VIC, 3029 Australia
 Freecall: 1800-334-653
 Email: sales@kubota.com.au

Web Site: <http://www.kubota.com.au>

Kubota New Zealand Limited

433 Rangitikei Street, Cloverlea, Palmerston North, 4412 New Zealand
 Freecall: 0800-582-682
 Email: sales@kubota.com.au

Web Site: <http://www.kubota.co.nz>

**Kubota
 Genuine Parts**
 for excellent
 performance,
 durability and
 safety

